

**NEOPHIR**



**Missile Turret MK I**



## Missile Turret MK I

*The rocket launchers are mounted on a portable carriage. They can be set up quickly in variable positions and fight enemies in a wide radius without direct visual contact.*

The pack contains files for:

- a rotatable missile turret on a carriage

Models are designed for 28mm miniatures, but might be re-scaled to fit your game or diorama.

They are suitable for various historic periods or game types.

# NEOPHIR

## ITEM LIST



N0014P1\_missile\_turret\_  
mk\_I\_bottom



N0014P1\_missile\_turret\_  
mk\_I\_top



N0014P1\_missile\_turret\_  
mk\_I\_launcher\_a\_left



N0014P1\_missile\_turret\_  
mk\_I\_launcher\_a\_right



N0014P1\_missile\_turret\_  
mk\_I\_launcher\_b\_left



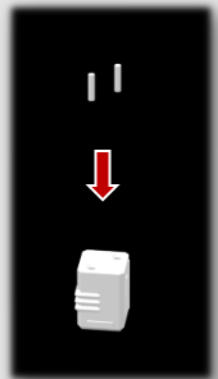
N0014P1\_missile\_turret\_  
mk\_I\_launcher\_b\_right

## PRINTING AND ASSEMBLY TIPS

### Recommended print settings

<b>Support</b>	<b>prints without support</b>
<b>Layer height</b>	<b>0.05-0.2mm (0.1mm recommended)</b>
<b>Infill</b>	<b>20% recommended</b>
<b>Approximate build volumes for prescaled files (this are not final model dimensions)</b>	<b>8,6 cm * 7,5 cm * 3,8 cm</b>

1. Insert 1,75mm filament parts in N0014P1\_missile\_turret\_mk\_I\_launcher\_b\_left as shown in picture.

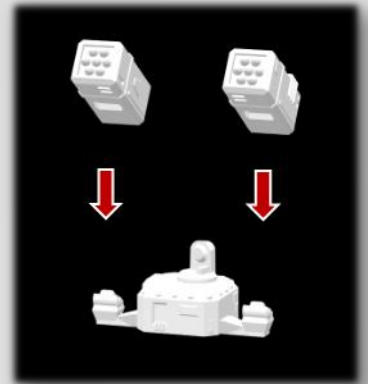


2. Glue N0014P1\_missile\_turret\_mk\_I\_launcher\_a\_left on N0014P1\_missile\_turret\_mk\_I\_launcher\_b\_left.

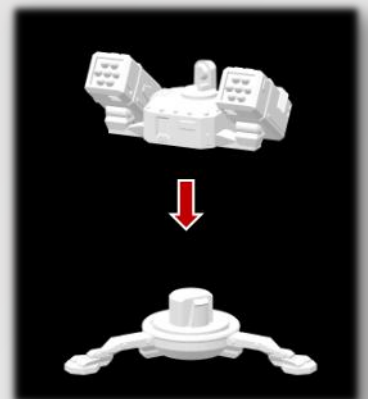


# NEOPHIR

3. Repeat step 1 & 2 for N0014P1\_missile\_turret\_mk\_I\_launcher\_a\_right and N0014P1\_missile\_turret\_mk\_I\_launcher\_b\_right.
4. Glue assembled left and right missile launcher on sides of N0014P1\_missile\_turret\_mk\_I\_top as in shown in picture.



5. Snap assembled N0014P1\_missile\_turret\_mk\_I\_top on N0014P1\_missile\_turret\_mk\_I\_bottom.





## LEGAL NOTICE

Please note that this offer contains STL files only.

You will need a home 3D printer or use a print service to get the parts printed. Models were designed for and tested with home FDM printers with 0,4 mm nozzle, 50-200 microns layer high and PLA plastic.

Print quality and results may vary depending on the used 3D printer and the printing and slicing software and used scale and parameters. Details might be lost, additional support be required or printability impacted in general when rescaling.

You may need to rotate objects for optimal printing or add supports, particularly for overhanging areas.

Figures, accessories and surrounding scenery seen in pictures are for demonstration purposes only and are not part of the product.

See the product description and/or item list of the digital models to find out exactly what the files contain.

All models and files are for personal use only and may NOT be used for commercial purpose (selling and/or distributing for profit).

All files are copyrighted works. Do not copy, alter, share, modify, or sell these files or the digital or physical models these files produce (2d or 3d).

We advise reading the full [terms and conditions](https://www.neophir.com/terms-conditions/) (<https://www.neophir.com/terms-conditions/>).